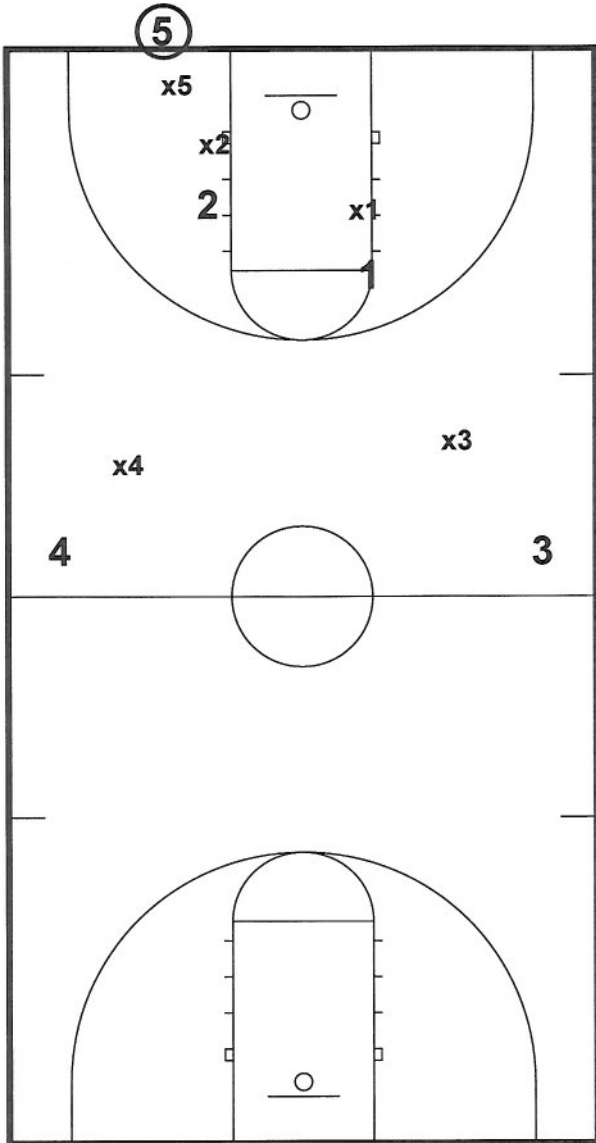


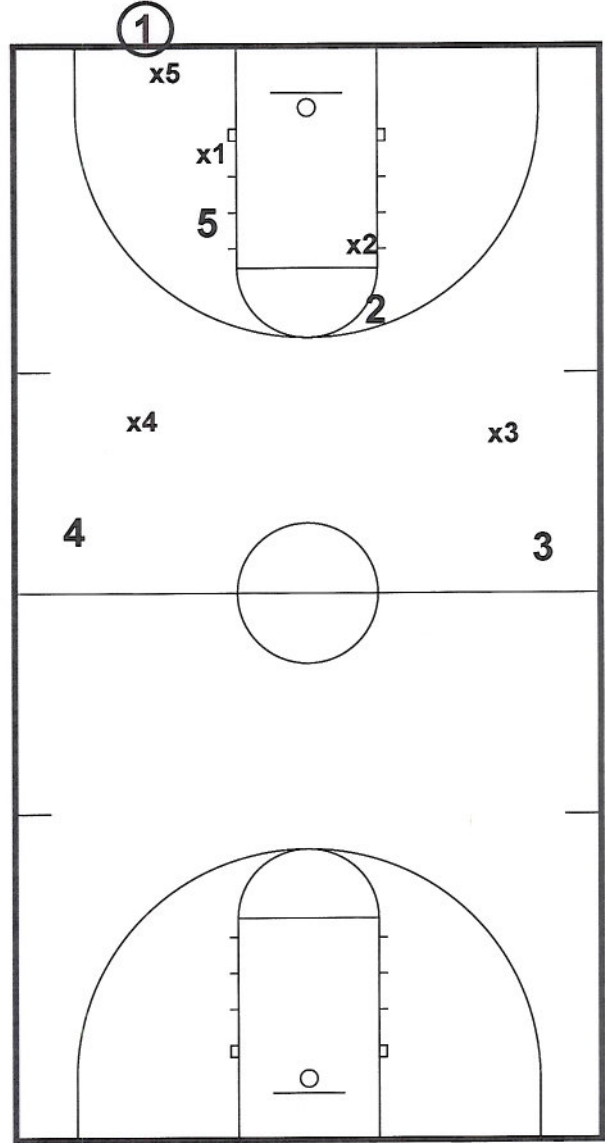
Oregon

55 ON
FULL COURT PRESS



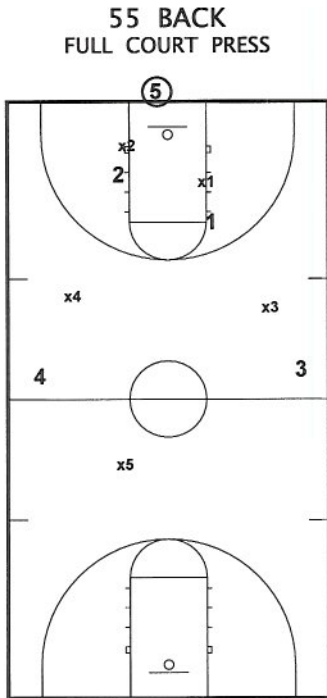
5 covers inbounds passer; all others pick up their player.
Face front Denial to prevent inbounds pass.
Switch any screening action.
Play man-to-man if ball is inbounded.

55 ON
FULL COURT PRESS

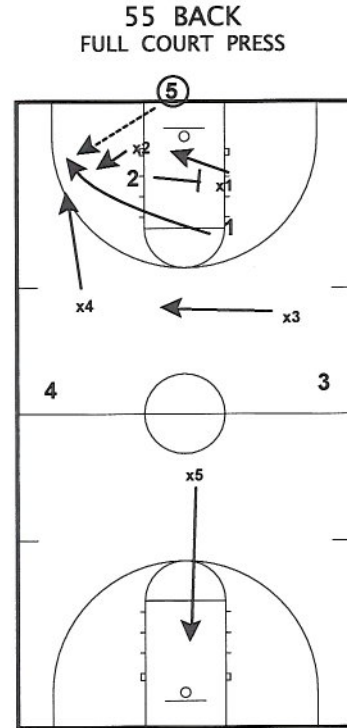


X5 and X1 switch out due to 1 player taking ball out of bounds.
A similar switch out will occur with X5 regardless of whose player takes the ball out.

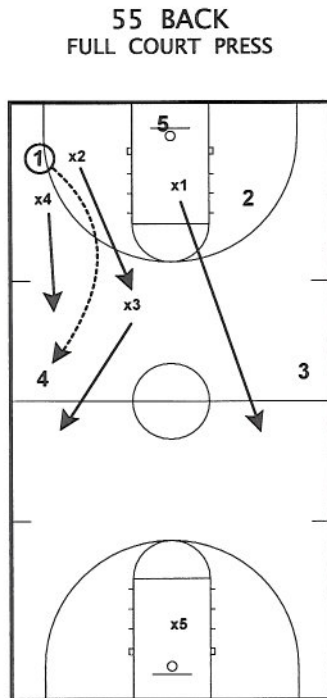
Oregon



X1, X2, X3, X4 pick up face front (same as 55 on);
X5 plays deep



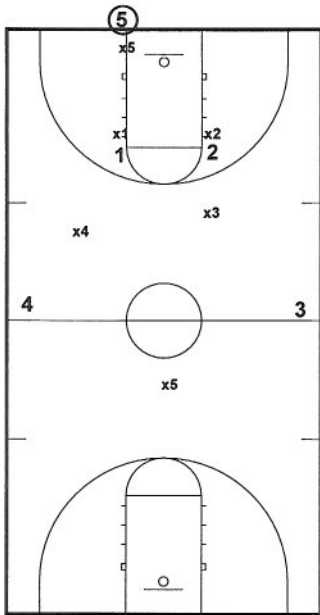
On entry pass closest two players trap (X2, X4);
X1 and X3 look to steal; X5 protects the basket



On any pass over the top, all chase back,
looking to re-create trap or sprint to cover open
players; X5 never leaves the hoop (no lay-ins).

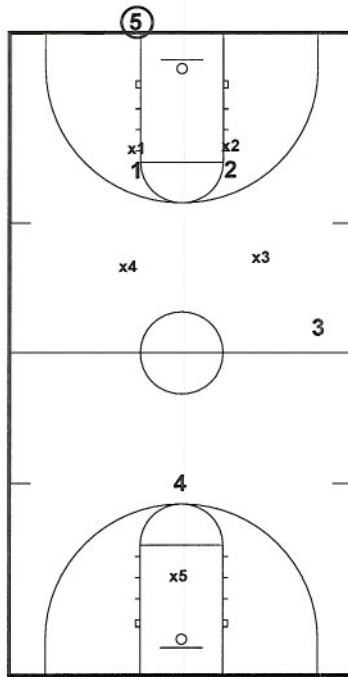
Oregon

55-Back Press



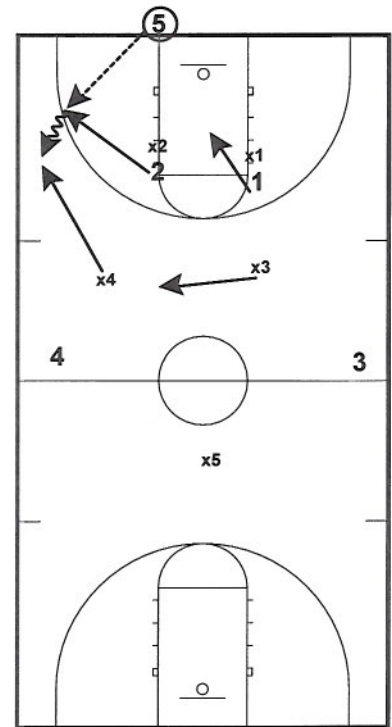
x3 can be MORE aggressively off her man because 5 doesn't have anyone back and can move forward.

55-Back Press

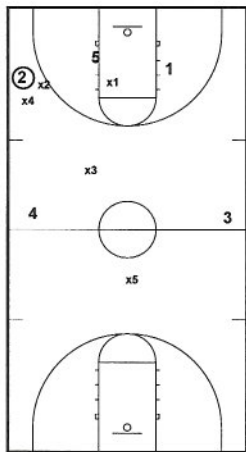


x4 is up and is in the steal position since her man is back.

55-Back Press

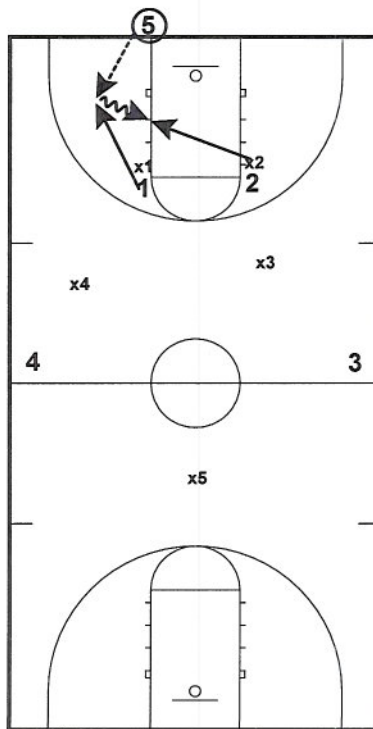


55-Back Press



x2 and x4 have the trap on sideline. Usually, 2 will throw to 4 and we would want x3 to get that. x1 has moved up to steal the pass to 5 or 1. We are FINE if x3 makes the wrong read out of the trap, but she must be IN THE HUNT to recover!

55-Back Press



If the ball goes middle, then x2 is trapping. x4 must make the read to 5 or split 3 and 4. x3 is moving UP to defend 2

55-Back Press

