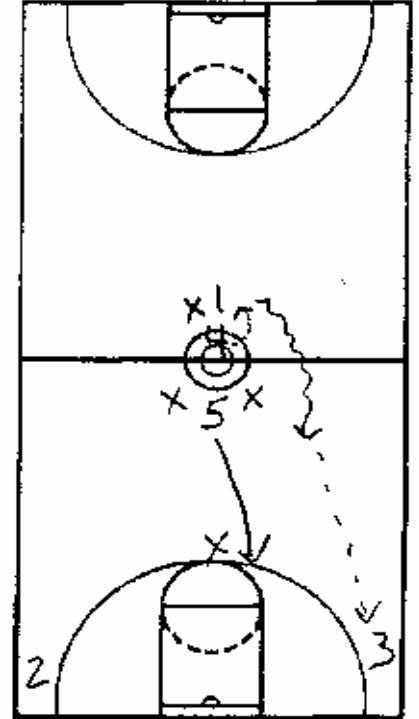
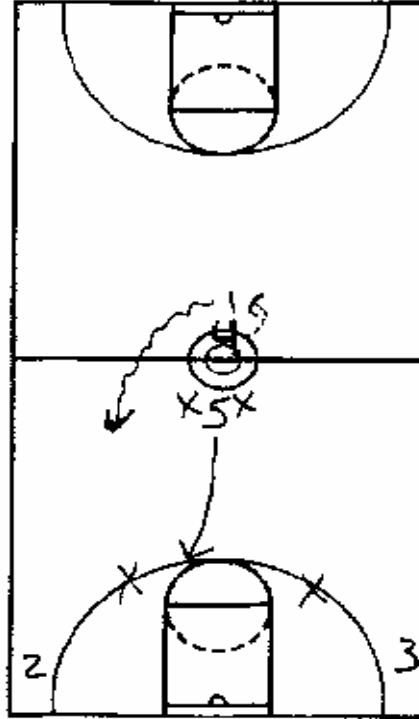
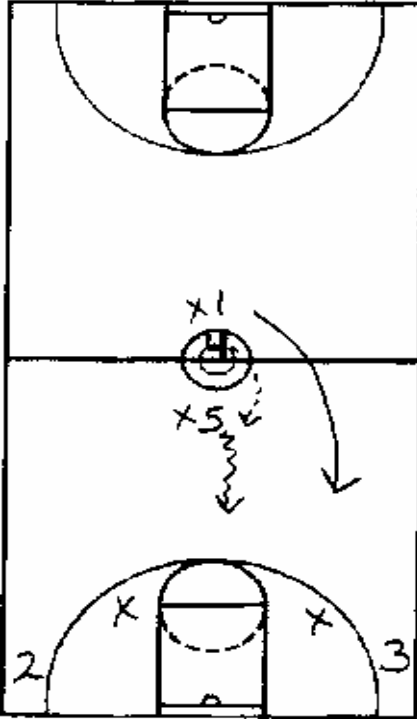


OPENING TIP PLAYS



“Corners” Tip Play

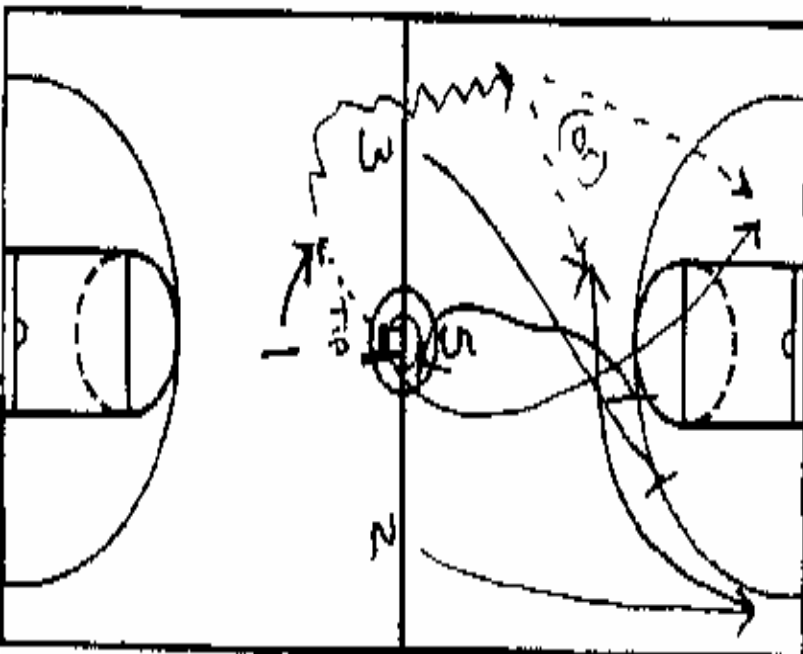
**4 tips in whichever direction 5 can most easily receive the ball

**Use only when it is fairly certain that you will get the tip

**5-man must get the ball

**If they double team the 5, then go to the 1 (Always go to the single covered person)

**Attack after gaining the tip



“Spread Floor” Tip Play

**4 tips ball to 1

**5 backscreens 4, who sprints to the rim

**1 pushes ball looking for 4

**2 sprints to wing and then comes off stagger screen from 3 & 5—this is the 2nd option