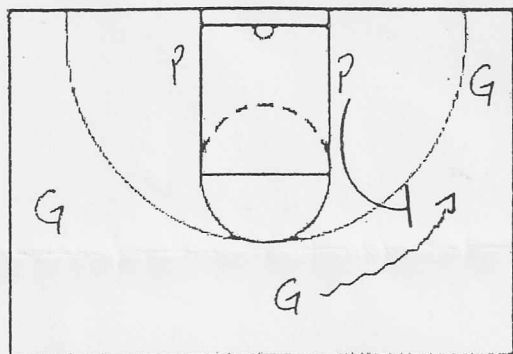


# Kansas Basketball

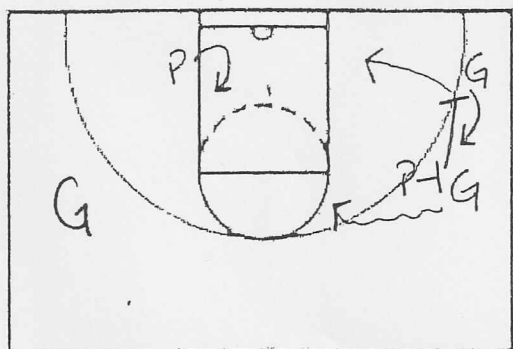
## “Fist”

We will run “Fist” as an entry or after the ball has been posted & kicked out. If the ball has been kicked out we will chase the pass with a ballscreen

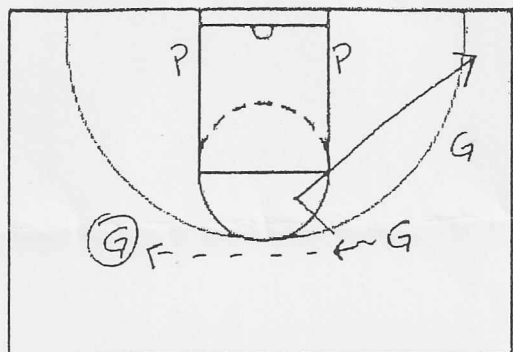


### DRIBBLE ENTRY:

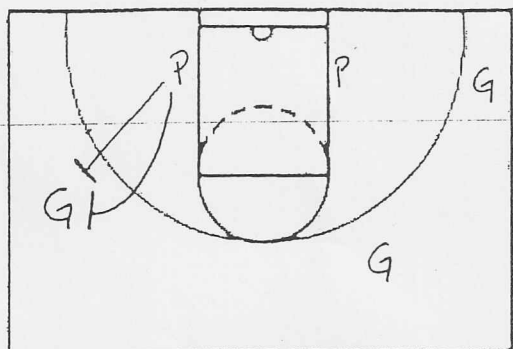
- Guard dribbles to wing
- Post sprints out & sets ballscreen



- Guard uses ballscreen & attacks elbow
- Low post ducks in when guard reaches lane line with dribble
- Post who set ballscreens, downscreens & slips



- If guard can't get to paint (hit duck in or throw back)
- He hits opposite guard & cuts to weakside corner

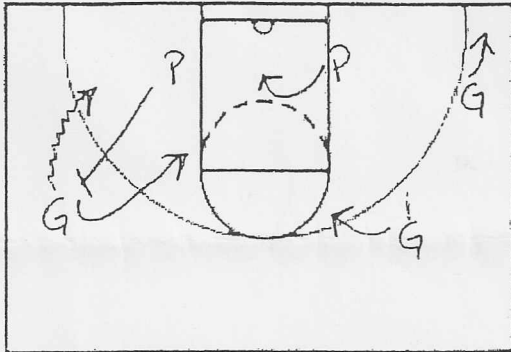


- On a single side the post will run out & set either a regular side ballscreen or a butt screen

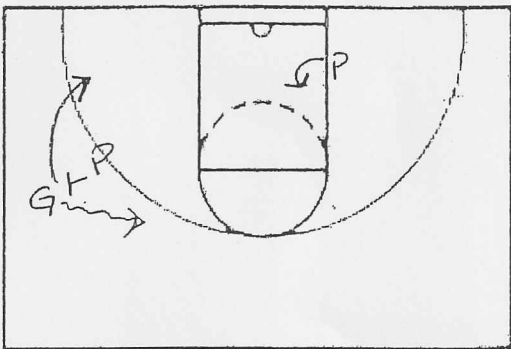
# Kansas Basketball

## Fist cont'd.

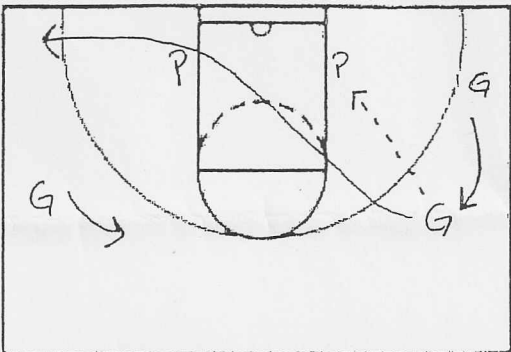
Handwritten mark



- If guard drives baseline, post pops to elbow
- Low post goes to front rim
- Drift to corner by guard
- Top guard relocated off lane line guard

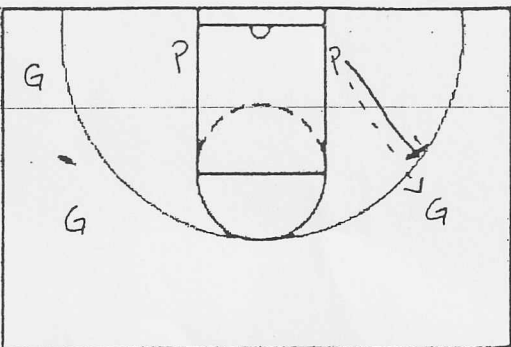


- If guard drives middle, post pops to wing
- Low post duck in



### IF BALL IS POSTED:

- Top guard cuts to weakside corner
- Bottom guard relocates up floor
- Opposite wing relocates off lane line



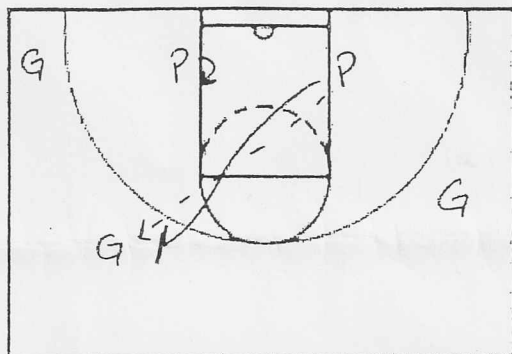
### PASSES TO SINGLE SIDE:

- post chases ball & can set either a butt or ballscreen

# Kansas Basketball

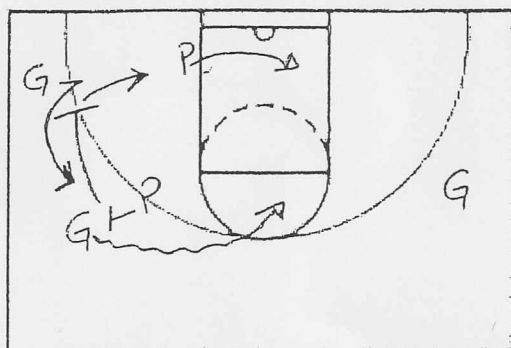
## Fist cont'd.

...



### PASSES & CHASES TO 2 SIDE:

- Ballside post ducks in
- Passer chases & sets side ballscreen



- Low block vacates & ducks in opposite on guard reaching lane line
- Ballscreener downscreens & slips