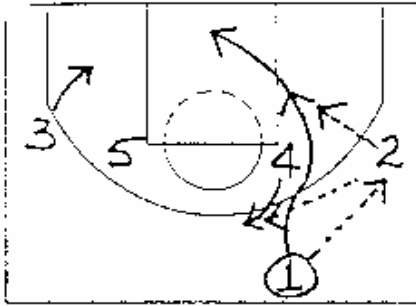
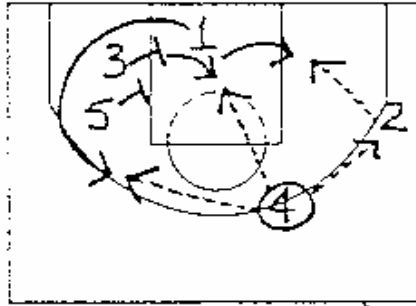


1-4 HIGH OFFENSIVE PLAYS

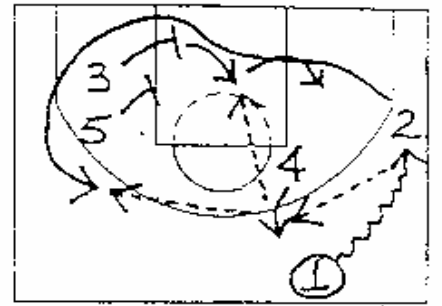
(UTAH)



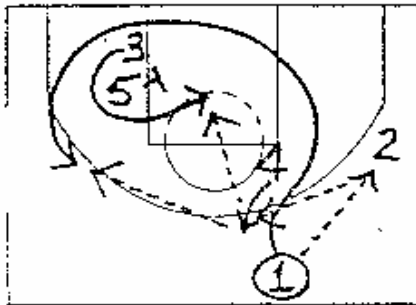
Call "4UP"
 Notes 1 HITS 2 + UCLA CUTS OFF 4, 4 STEPS BACK, 2 HITS 4, DEFEND 2 TO 1 PASS.



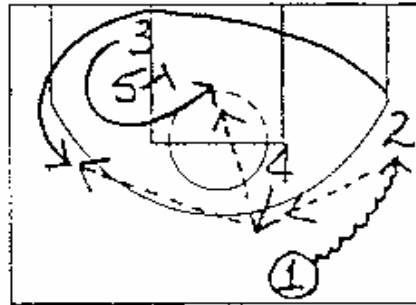
Call "4UP (CONT)"
 Notes 1 OFF 3-5 STAGGER, 3 DUCKS IN, 4 HITS 1 W/ OPTION TO HIT 2, POSTUP 3.



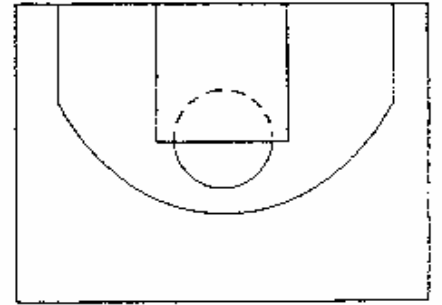
Call "4UP (OPTION 1)"
 Notes 1 DRIBBLE CHASES 2, 1 HITS 4 AT TOP, 2 OFF 3-5 STAGGER.



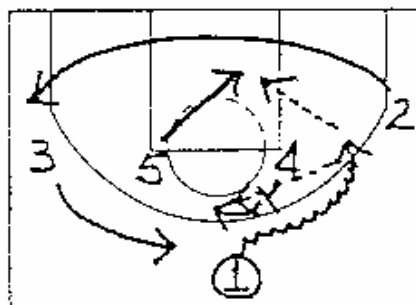
Call "4UP CURL"
 Notes 1 HITS 2 + UCLA CUTS OFF 4, 2 HITS 4 ON STEP BACK, CURL-CURL ACTION.



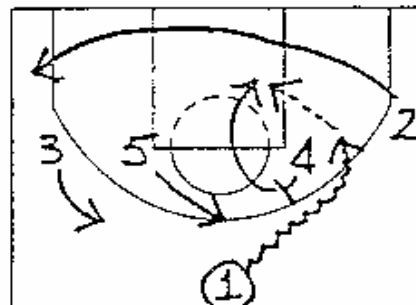
Call "4UP CURL (OPTION 1)"
 Notes DRIBBLE CHASE ENTRY INTO "4UP CURL" ACTION.



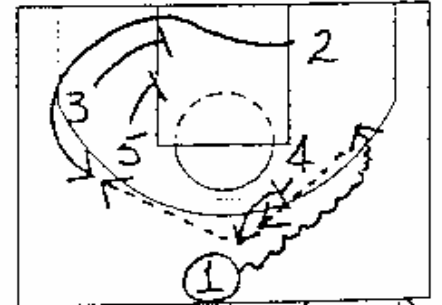
Call _____
 Notes _____



Call "4UP X"
 Notes 1-4 ELBOW PICK + POP, 5 DIVES LANE.



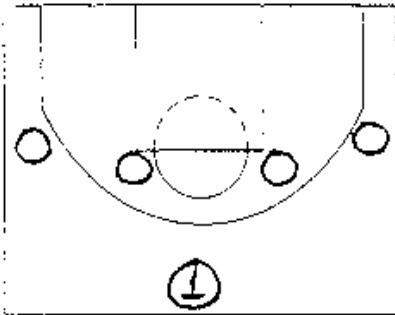
Call "4UP X (OPTION 1)"
 Notes 1-4 ELBOW PICK + ROLL, 5 POPS HIGH.



Call "4UP X (OPTION 2)"
 Notes 1-4 ELBOW PICK + POP, 1 HITS 4, 2 OFF 3-5 STAGGER.

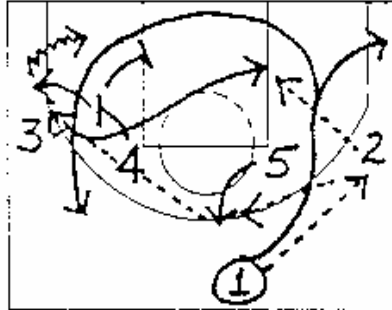
1-4 HIGH OFFENSIVE PLAYS

(LA LAKEKS)



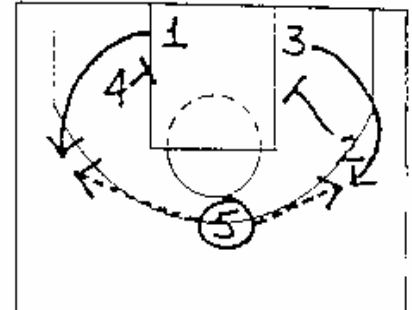
Call "4UP"

Notes 1-4 HIGH SET...
PLAYERS INTERCHANGEABLE.



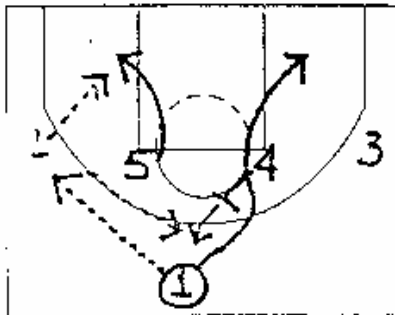
Call "4UP" (WING PASS BALLSIDE CUT)

Notes 1 HITS 2 & CUTS BALLSIDE, 3 SLICE CUTS FROM WS TO LP, 1 HAS OPTION TO CORNER CUT, ISO 4 WS.



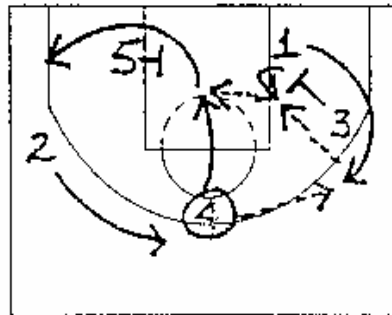
Call (CONT)

Notes ONCE BALL IS CENTERED... PINDOWNS ON BOTH SIDES WILL OCCUR.



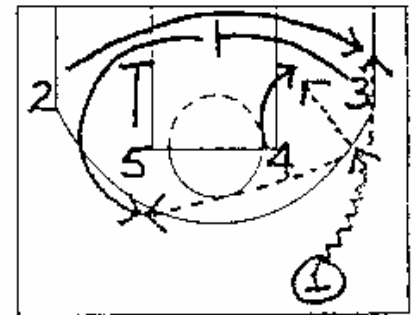
Call "4UP" (WING PASS WS CUT)

Notes 1 HITS 2 & CUTS OFF WS HIGH POST, STRONG SIDE BIG ROLLS TO LP, 4 POPS TO TOP.



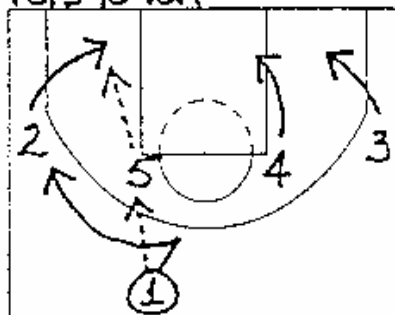
Call (CONT)

Notes ONCE BALL IS CENTERED... 3 PINS 1, POSTUP 3 ON BALL REVERSAL, 4 CLEARS, 2 REPLACES AT TOP.



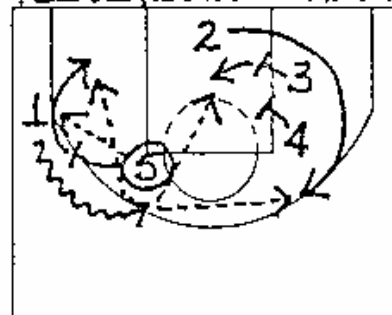
Call "4UP" (DRIBBLE CHASE ENTRY)

Notes ... 3 CROSS SCREENS 2, 4 ROLLS TO POST, 5 PINS DOWN FOR 3.



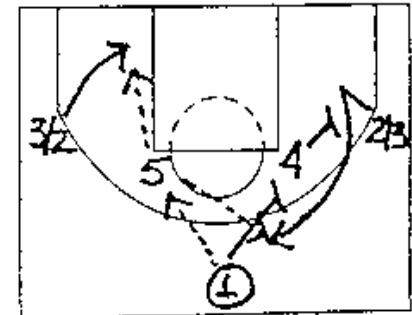
Call "4UP" (HIGH POST ENTRY)

Notes STRONG SIDE WING BACKCUTS, PG WILL SHORT IT, WS BIG ROLLS TO WS LP,



Call (CONT)

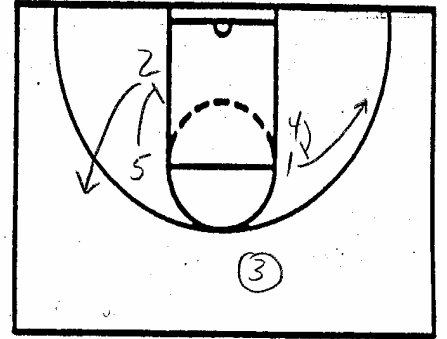
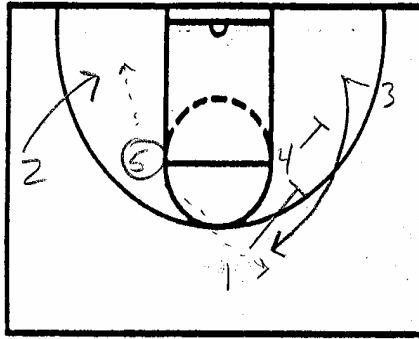
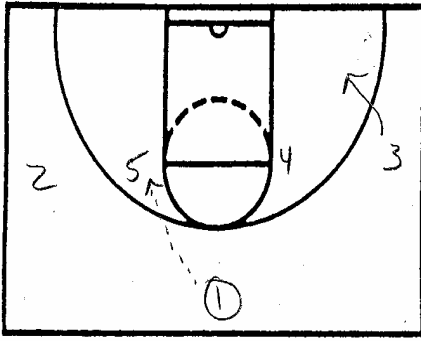
Notes 5 HITS 1 INTO SIDE PICK! ROLL, 2 OFF WS STAGGER.



Call (HIGH POST ENTRY) OPTO 1

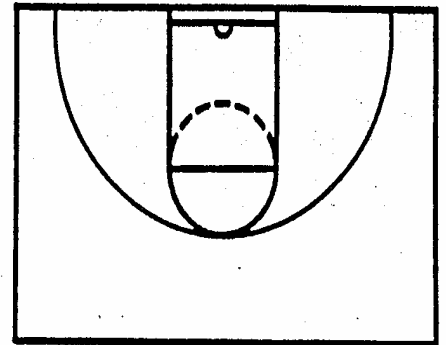
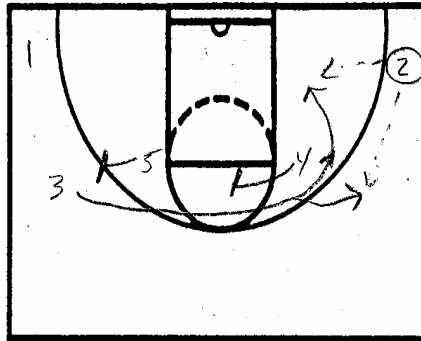
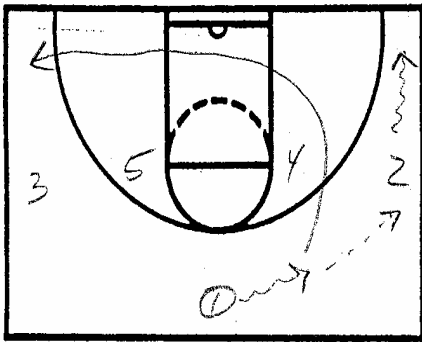
Notes HIGH WS STAGGER FOR 2/3, STRONG SIDE WING BACKCUTS.

1-4 HIGH OFFENSIVE PLAYS

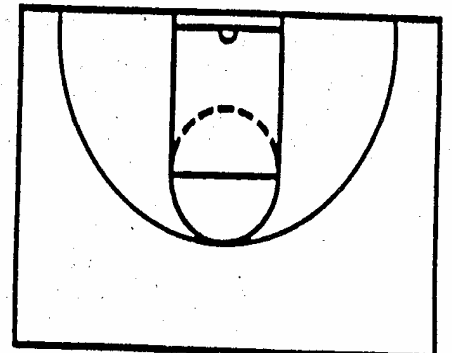
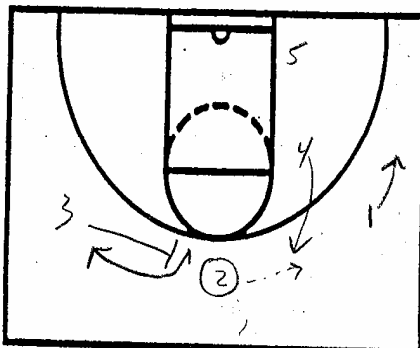
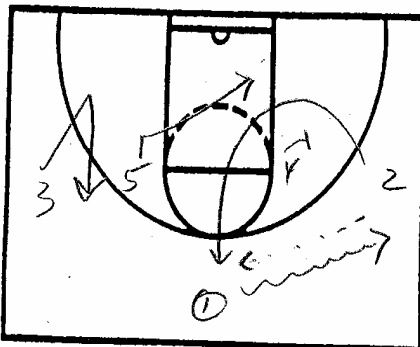


NOTES Majerus

⑤ Hits ② at top of key
OR hits ② backdoor

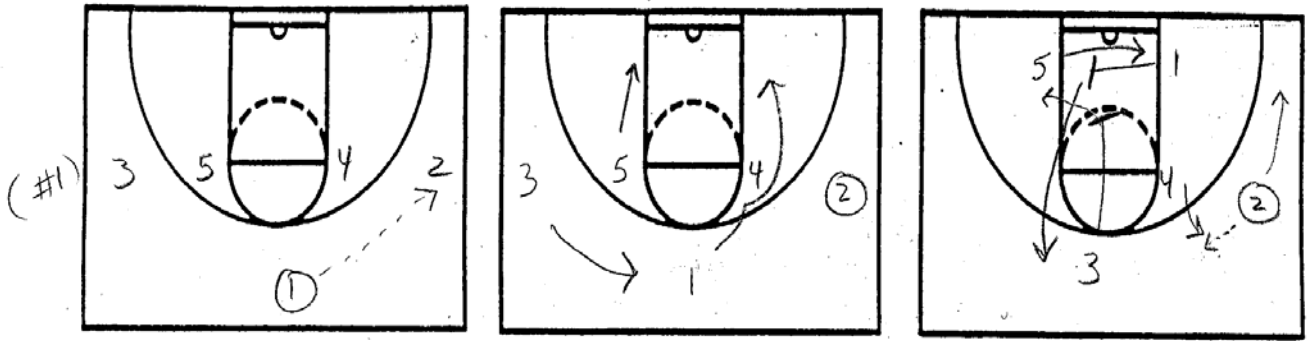


NOTES ORLANDO

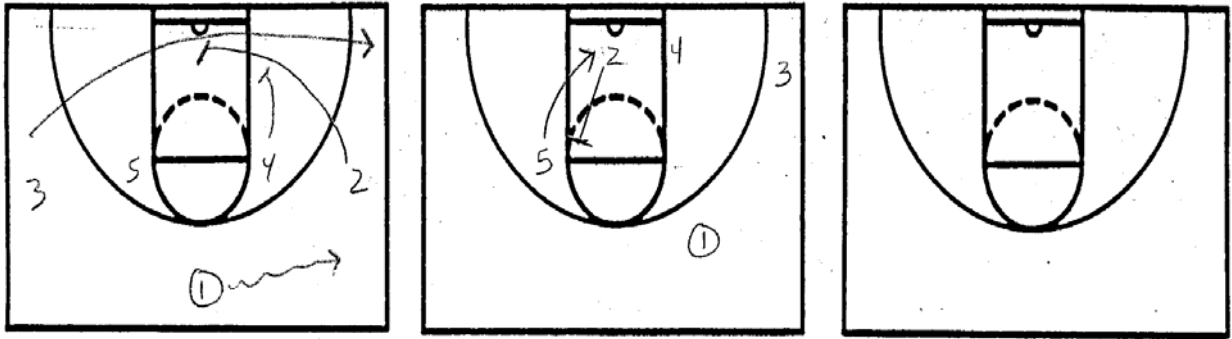


NOTES SMU #1

1-4 HIGH OFFENSIVE PLAYS



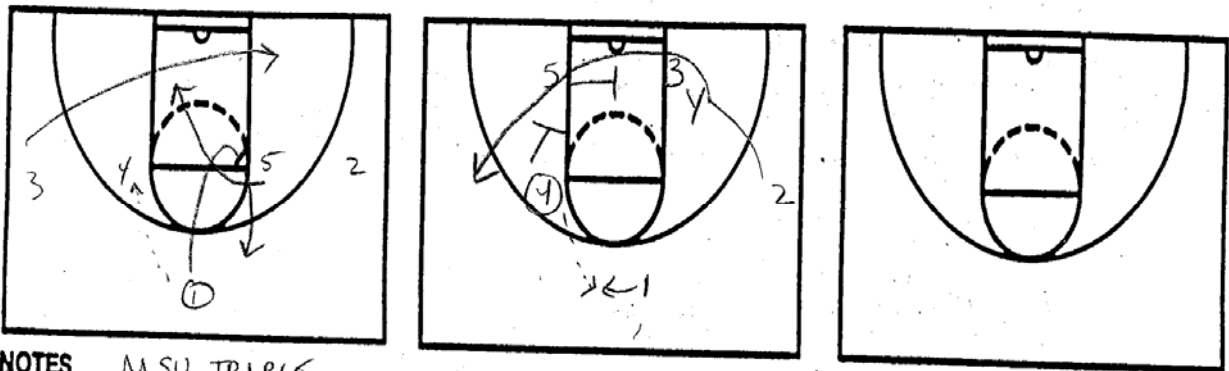
NOTES



NOTES

PURDUE

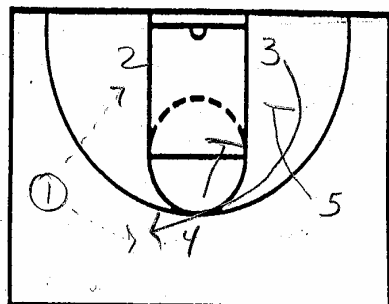
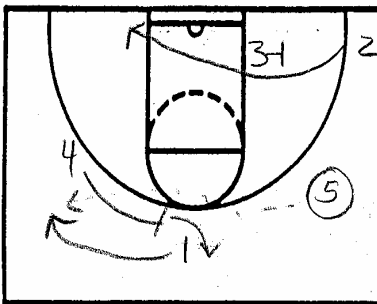
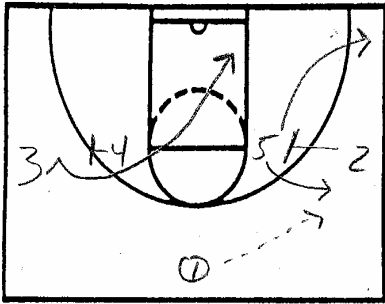
① can lob to ⑤, hit ④ on seal; or ② for shot on DP



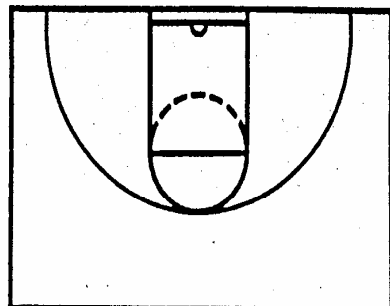
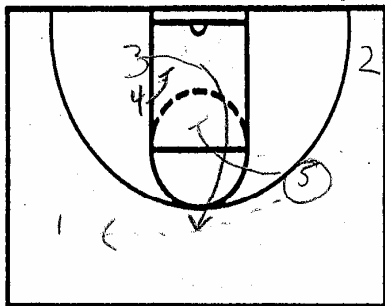
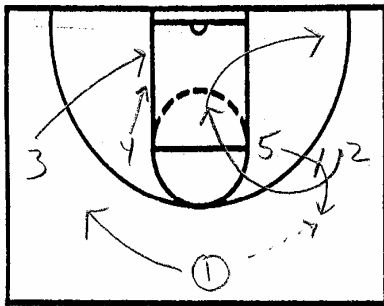
NOTES

MSU TRIPLE

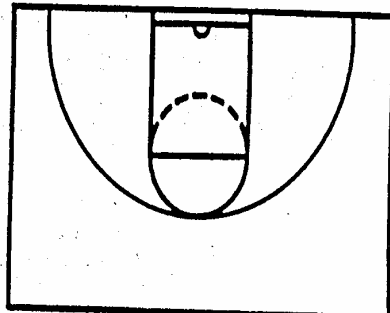
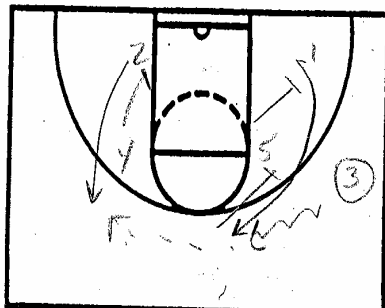
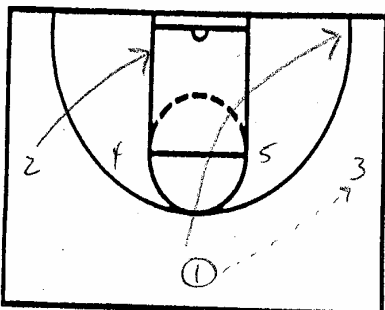
1-4 HIGH OFFENSIVE PLAYS



NOTES MSU FLARE



NOTES TONY DELK



NOTES MISSISSIPPI ST. 2-MAN

look at 4 on postup
look at 1 on stagger